



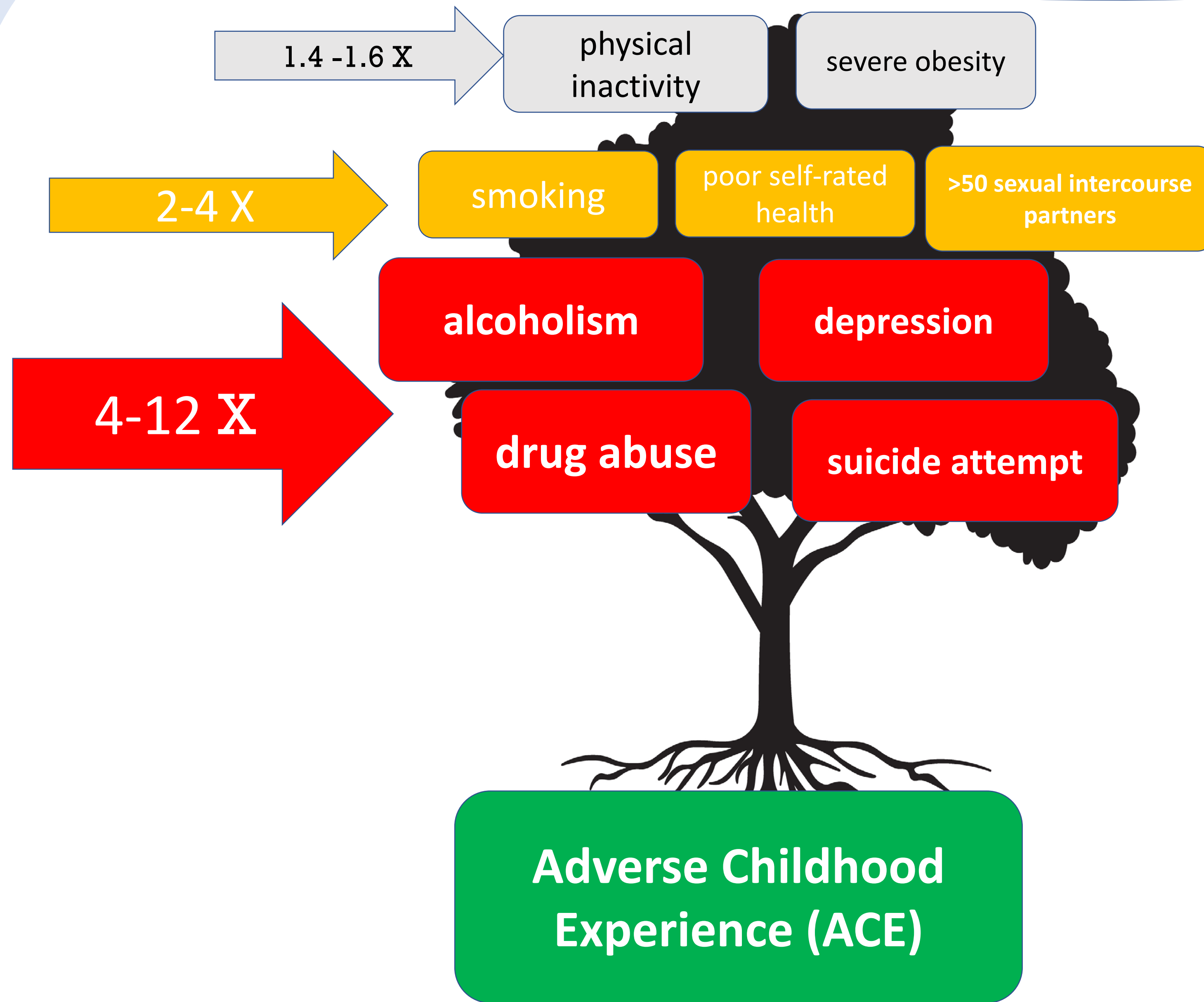
Addictions and Incarceration: root causes of addictions and community support for re-entry

Koichi Tanji¹ and Mizuki Johnson²

- 1. Bastyr University School of Naturopathic Medicine/AHEC scholar
- 2. University of Washington School of Pharmacy/AHEC scholar



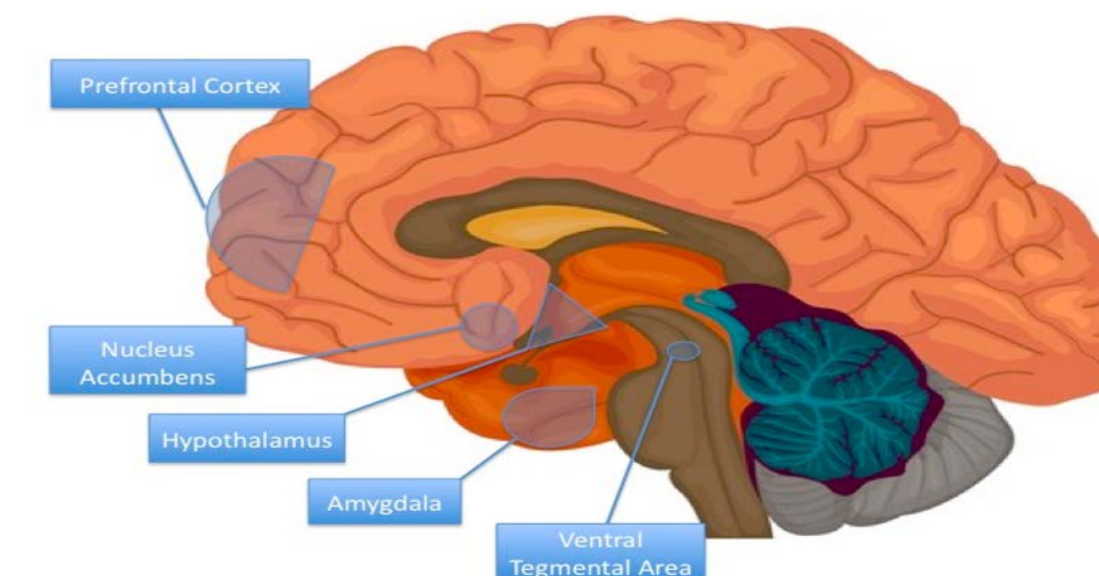
A root cause of substance addictions



*Inmates reported 4 times as many adverse childhood experiences than the general public.

*Addictions and other psychiatric health problems are the most common health conditions seen at KCCF.

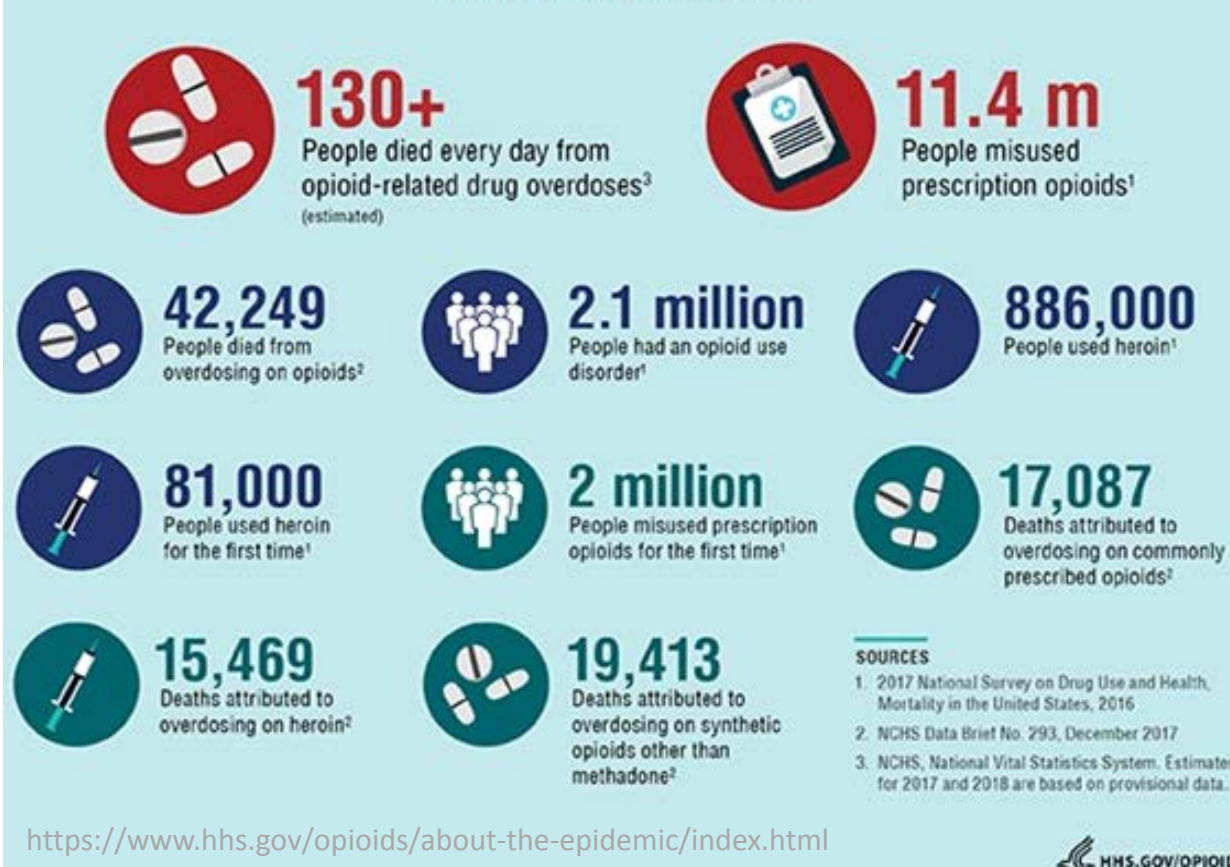
Pathology of Addiction [1], [2]



Opioid Addiction [3]

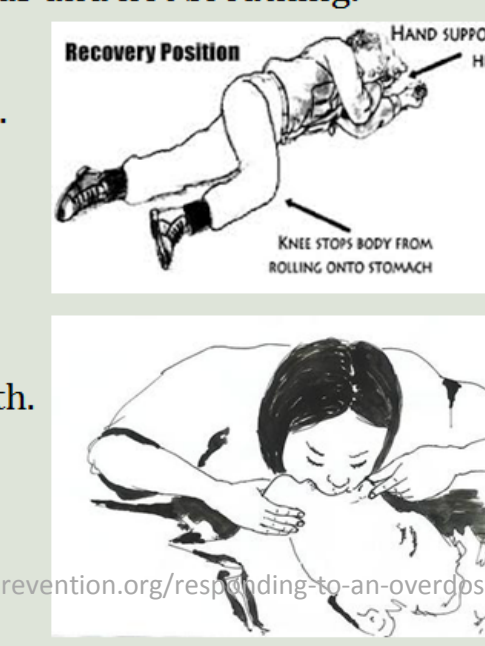
- Opioid medication → pain relief and pleasure.
- Long term opioid use → tolerance → Use of a stronger dose of an opioid

THE OPIOID EPIDEMIC BY THE NUMBERS



What to do if you see an opioid overdose

1. Call 911.
Tell the operator that someone is unconscious and not breathing.
Give your location.
Leave the door open or stay with the person.
If you need to leave the person, put them in the recovery position.
2. Perform rescue breathing.
Pinch their nose and breathe into their mouth.
3. Give them naloxone.
Put the kit together and spray up their nose.
Wait 1-3 minutes before giving more.



Treatments



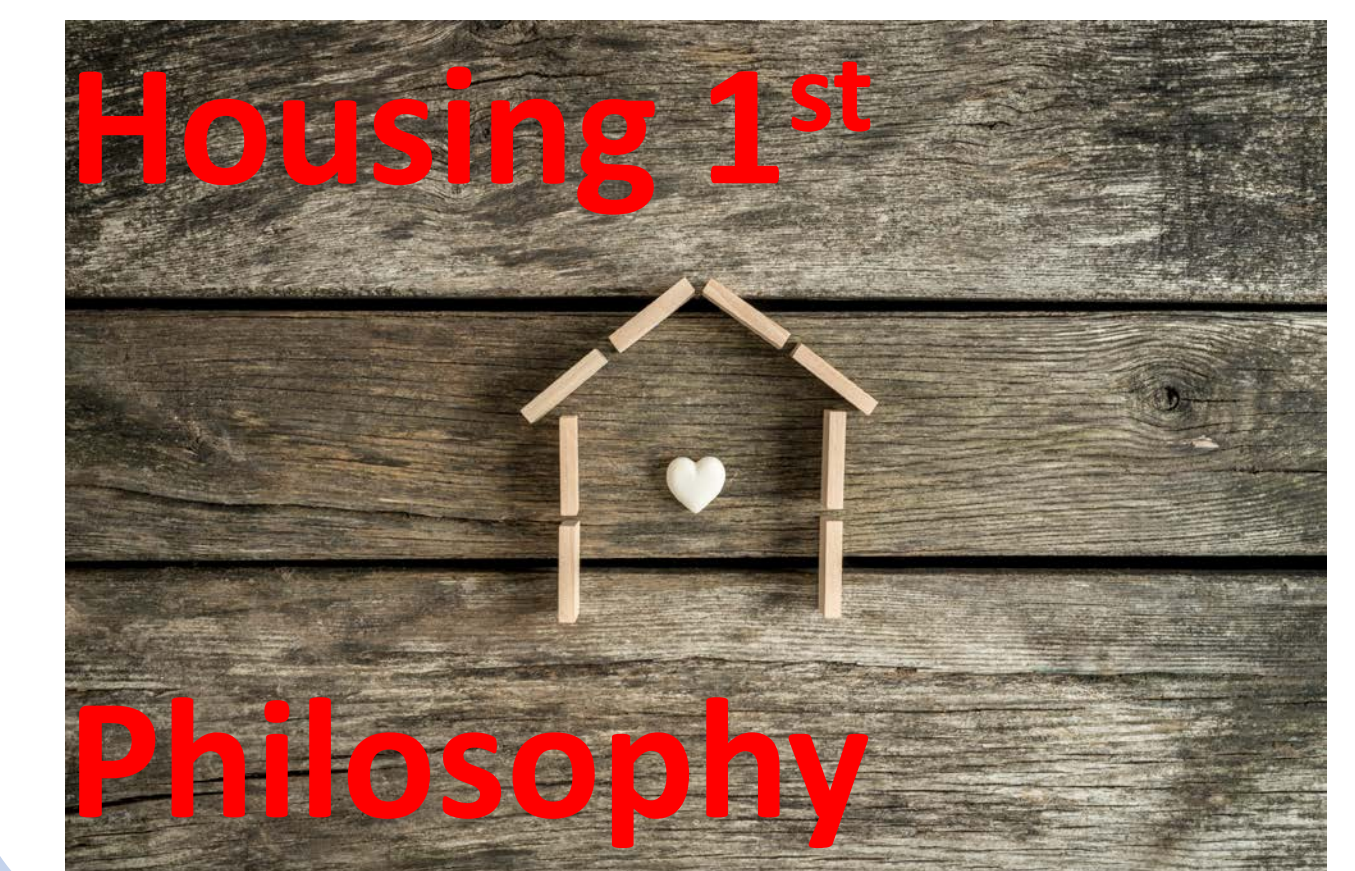
References

1. American Society of Addiction Medicine
2. A. Tom Horvath, Ph.D., ABPP, Kaushik Misra, Ph.D., Amy K. Epner, Ph.D., and Galen Morgan Cooper, Ph.D. *Addiction Changes Brain Structures and Their Functioning.*
3. Mayo Clinic. *How Opioid Addiction Occurs.*

Acknowledgements

We would like to thank Dr. Benjamin Sanders for letting us interview him and providing us insights into the issue of addiction and mental health that inmates are experiencing at KCCF. We could not have done this without his help, and that of other members of KCCF who helped connect us to Dr. Sanders.

Solution



Housing 1st

Philosophy